

**ALMA<sup>®</sup>**

**RIVESTIMENTI MATERIALS REVÊTEMENTS**

# Categoria B

category B / categorie B

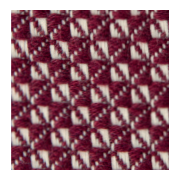
## ORIGAMI



ERMOR1601



ERMOR1603



ERMOR1604



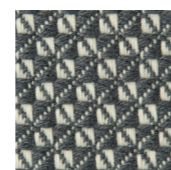
ERMOR1605



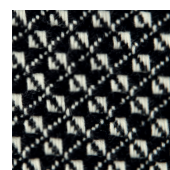
ERMOR1609



ERMOR1611



ERMOR1612



ERMOR1613

## CATEGORIA B category B / categorie B

### ORIGAMI

COMPOSIZIONE / Composition / Composition  
100% CO

RESISTENZA ALL' ABRASIONE / Abrasion  
Martindale / *Résistance à l'abrasion (Martindale)*  
30.000 cicli / cycles / cycles

H. 138/140 cm

PESO / Weight / Poids 850 gr/mq

NORMATIVE / Certification / Certification  
California CAL 117; USA NFPA 701;  
USA NFPA 260

RESISTENZA ALLA LUCE / Light resistance /  
*Résistance à la lumière 5*

PILLING (2000 cicli / cycles/ cycles) 3 - 4

PULIZIA / Cleaning / *Nettoyage*

Acqua e sapone neutro.

Water and neutralsoap.

*Eau et savon neutre.*

Antifiamma solo CAL117 / Flame retardant only CAL117 /  
*Résistant au feu que pour le code CAL117*